

SMARTWAYS
<http://www.lanspy.com>

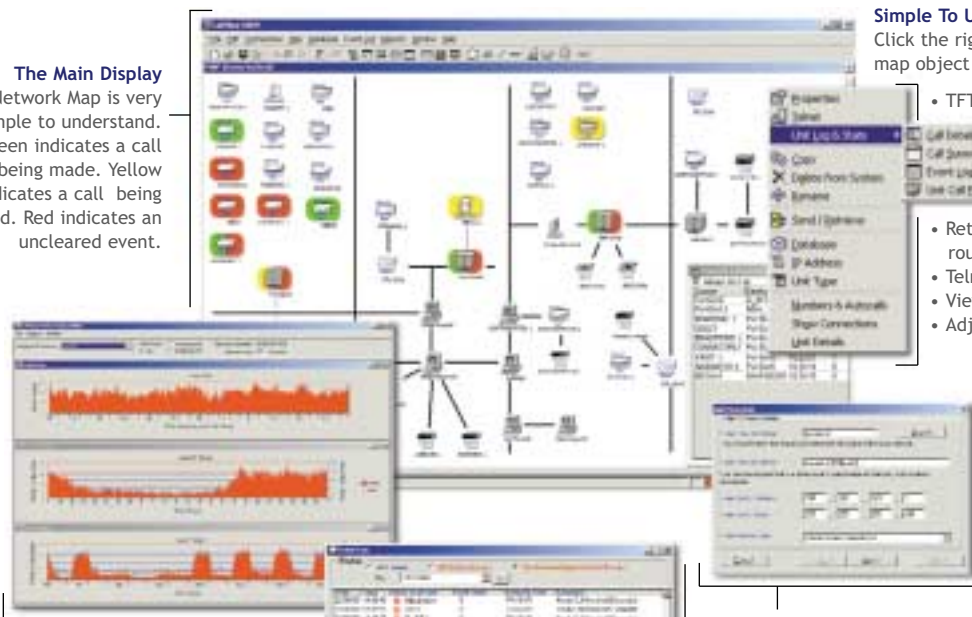


LANSpy
Enterprise Router Manager

Keeps watch - so you don't have to.

LANSpy™ Enterprise Router Manager
Keeps watch - so you don't have to.

The Main Display
The Network Map is very simple to understand. Green indicates a call being made. Yellow indicates a call being received. Red indicates an uncleared event.



Simple To Use
Click the right mouse button on a map object and manage the device.

- TFTP new code updates
- Retrieve and view a router's configuration
- Telnet directly to the device
- View call logs
- Adjust thresholds

Know How Many ISDN Circuits Are In Use
Imagine the scenario. You have two Cisco 3640 routers. Each has a Primary Rate Interface Card (PRI). One PRI has 10 channels. The other has eight. That's a total of 18 ISDN channels/ports.

Real-Time ISDN Ports Monitoring
The ports monitoring feature of LANSpy provides a real-time view of all your ISDN ports. Use this feature to keep you informed. Calculate growth or reductions. Save money. Become proactive.

LANSpy Wizard
To add a new router to the network map is fast and simple using the Add Router Wizard. Automatic router discovery makes this task a breeze.

Event Log
The real-time event log keeps track of calls in or out, failed calls, all DASS2 and Q931 events, threshold breaks, call lengths etc.



Enterprise Router Manager

THE SMARTWAYS PRODUCT RANGE:

• LANSpy™ Enterprise Router Manager

• Bespoke Software Design and Development

• Professional Internet and Intranet Services:

Leased Lines from 64K - 45MB

ISDN

Email and DNS Services

Co-location Services

Facilities Managed Servers

• Website Services:

Business Hosting Services

Concept, Copy, Design and Construction

Training

• Internet Security:

Firewalls

Antivirus

Content Access Management

Session Monitoring

• E-Commerce Services:

Webstore Development

Implementation

Payment Gateways

Consultancy and Market Development



SMARTWAYS LANSpy CONTACT DETAILS:

Head Office: 1 Scirocco Close, Moulton Park Office Village, Northampton NN3 6AP

Tel: +44 (0) 1604 670 500 Fax: +44 (0) 1604 670567

website: www.smartways.net email addresses: sales/info/support@smartways.net

**LANSpy™ Enterprise Router Manager
Keeps watch - so you don't have to.**

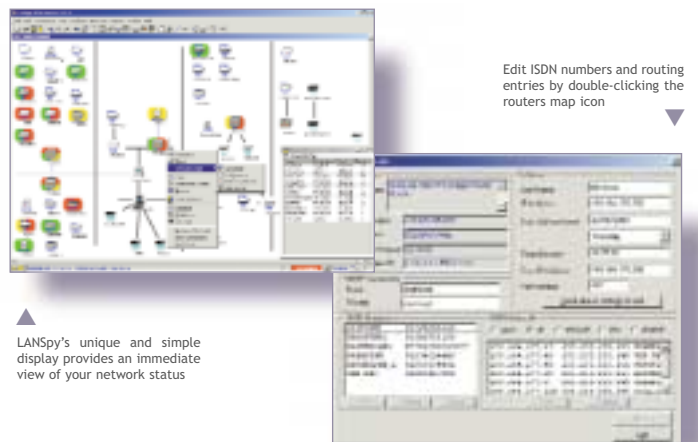
LANSpy Router Management Systems are the last word in technologies engineered to obtain optimum performance from ISDN and WAN systems, whether they involve a single remote router or an in-house network incorporating hundreds of units.

The most obvious and tangible attraction of LANSpy systems is that from the moment of installation they will drastically reduce those call charges which are an increasingly critical overhead in enterprises reliant on telecommunications. In a nutshell this means that in any like-for-like comparison you'll reduce your calls. And, as your reliance on telecommunications grows, the savings you make will increasingly dwarf the original investment.

But the benefits of LANSpy go far beyond the bottom-line of your phone-bill. Indeed they're almost unlimited. Because, as a Management Information tool, it has truly staggering potential. Potential which can be harnessed to analyse, to plan ahead, to spot trends early, and to fine-tune your company's working practices.

LANSpy isn't just a box-of-tricks which you'll want to install in an exchange and forget about (though, importantly, you can do if you wish!) That's because it provides real-time monitoring of every call your ISDN router's make.

The displays are simple to understand and the data can be exported and used with Microsoft Excel. The upshot of all this is that LANSpy is a management tool which you don't need to be an econometrician to use. A management tool which, intelligently used, is dynamite!



▲ Edit ISDN numbers and routing entries by double-clicking the routers map icon ▼

▲ LANSpy's unique and simple display provides an immediate view of your network status

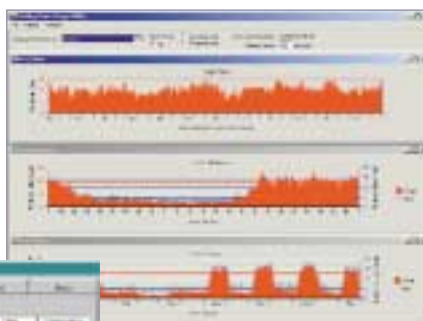
LANSpy™ Creates Opportunities.

And not simply the opportunity to save a lot of money on call charges. Because, by enabling management to observe and record performance data, by crunching the numbers for you, LANSpy will signpost improved productivity whilst reducing waste.

With so many tools at hand - including the ability to instantly conjure up over 400 graphs and charts - users can deconstruct and remodel almost any aspect of their company's operations. Indeed, wherever router's are being used LANSpy will identify opportunities to adopt better working practices.

But LANSpy's usefulness should also be measured in terms of Opportunity Costs. Because without it you'd spend a long time blindly tweaking your system. A long time which would be better spent on other management issues.

▶ Real-Time ISDN Ports Monitor
Capture real-time information that clearly shows exactly how many ISDN ports are in use across your entire network or per router



▶ With over 400 types of graphing options, you'll be spoilt for choice when it comes to creating a management report of call traffic

- Lowers the costs of owning and operating ISDN-based (& WAN-based) networks
- Dramatically improves the capacity to forecast ISDN circuit requirements
- Offers an instant and saveable source of ready-analysed Management Information
- Facilitates forecasting of future band-width requirements
- Provides an invaluable logistical tool for both proactive and reactive strategists
- Makes telecoms decision-making easier, freeing you to focus elsewhere
- Generates an unparalleled source of Accounting Information

LANSpy™ Disposes of Threats.

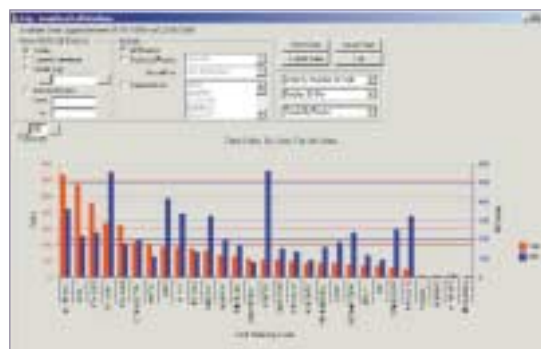
As modern enterprises harness state-of-the-art technologies they do, of course, embrace increasing liabilities. Any liability is a threat. Sub-optimal telecommunications systems in particular comprise massive threats to security and profitability.

In recent times the biggest threats to telecom-reliant operators have been from hackers, from telecommunications theft by employees, and from autodial errors which (even in the course of a weekend) have been known to leave unsuspecting subscribers with liabilities to their providers which run into five figures.

All of these threats are ever-present. They're particularly difficult to prevent outside normal working hours. But LANSpy operates 24-hours a day, 365 days a year, giving an unprecedented level of fully-automated vigilance and defence.

LANSpy cannot guarantee to eliminate every threat, but it does go a long way towards effective ring-fencing so our clients can enjoy peace of mind.

- Produces audible and visual warnings if and when thresholds are breached
- Automatically shuts down ISDN calls to curtail hugely expensive dial errors
- Identifies excessive (and fraudulent) users as and when they're on-line
- Records who your company is calling, collating frequency and durations
- Pinpoints and warns of improperly-configured and wasteful devices
- Enables hourly and daily thresholds to be set and complied with
- Reduces down-time, enabling easy system repairs and upgrades
- Provides state-of-the-art router back-up systems
- Hedges against institutional chaos with its 'at-a-glance' simplicity

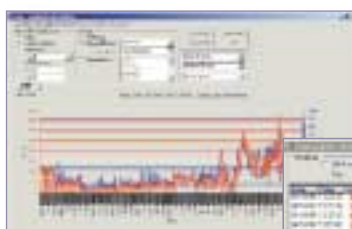


Instantly spot out-of-bound ISDN calls and router-to-router connection times

LANSpy™ Benefits Outweigh Cost.

Easily. Because, like any commercially viable system in a competitive environment, LANSpy products must achieve early payback for the user. Quite how rapidly that can be achieved will be largely dependent on its user's volume of telecommunications traffic. But LANSpy would be delighted to supply you with a projection that pinpoints (with a high degree of accuracy) the time at which the system should have paid for its installation. Furthermore, we can reinforce your own projection by demonstrating the savings which companies with operations similar to your own have already achieved.

It should not be forgotten that, from a holistic perspective, LANSpy users don't just save as ISDN subscribers. That's because LANSpy's greatest economic potential is consequential. It's the Management Information system which, in intelligent hands, can have the greatest cumulative impact on your revenue stream and operating profit.



This graph shows historical ISDN call activity and trends

Extensive events logs. 100's of event types reported

Time	Event Type	Source	Destination	Duration	Cost
10:00:00	ISDN Call	10.10.10.1	10.10.10.2	00:01:30	£1.50
10:05:00	Router Error	10.10.10.1			
10:10:00	ISDN Call	10.10.10.1	10.10.10.3	00:02:00	£2.00
10:15:00	Router Error	10.10.10.1			
10:20:00	ISDN Call	10.10.10.1	10.10.10.4	00:01:45	£1.80
10:25:00	Router Error	10.10.10.1			
10:30:00	ISDN Call	10.10.10.1	10.10.10.5	00:01:15	£1.20
10:35:00	Router Error	10.10.10.1			
10:40:00	ISDN Call	10.10.10.1	10.10.10.6	00:01:00	£1.00
10:45:00	Router Error	10.10.10.1			
10:50:00	ISDN Call	10.10.10.1	10.10.10.7	00:01:30	£1.50
10:55:00	Router Error	10.10.10.1			
11:00:00	ISDN Call	10.10.10.1	10.10.10.8	00:01:15	£1.20
11:05:00	Router Error	10.10.10.1			
11:10:00	ISDN Call	10.10.10.1	10.10.10.9	00:01:00	£1.00
11:15:00	Router Error	10.10.10.1			
11:20:00	ISDN Call	10.10.10.1	10.10.10.10	00:01:30	£1.50
11:25:00	Router Error	10.10.10.1			
11:30:00	ISDN Call	10.10.10.1	10.10.10.11	00:01:15	£1.20
11:35:00	Router Error	10.10.10.1			
11:40:00	ISDN Call	10.10.10.1	10.10.10.12	00:01:00	£1.00
11:45:00	Router Error	10.10.10.1			
11:50:00	ISDN Call	10.10.10.1	10.10.10.13	00:01:30	£1.50
11:55:00	Router Error	10.10.10.1			
12:00:00	ISDN Call	10.10.10.1	10.10.10.14	00:01:15	£1.20

- A simple 5-unit systems cost just £795. Annual maintenance only £159 (Per unit that's about the cost of a bottom-of-the-range Zip or CD Drive)
- Identifying excessive ISDN use and improperly configured devices saves money
- 'Out of bounds' use is eliminated altogether
- LANSpy offers early payback. So the more you use it, the more it saves
- 100-Router system (we can go as big as you like) cost £8565 and maintenance £1713
- Installation and User Training are charged at £750 per day (in England & Wales)
- Recent auto dial-errors in absentia have cost some companies in excess of £20,000 in charges
- As a diagnostic tool LANSpy can identify whether ISDN or leased lines are the most economic



Would I be Some Sort of Guinea Pig for LANSpy™?

Certainly not! These are already tried and tested products. More to the point, they are products which have been installed and used by a range of well-known and listed blue-chip companies which have thoroughly scrutinised LANSpy prior to purchase. If LANSpy wasn't reliable, if it wasn't demonstrating the savings and performance which we'd promised, they wouldn't still be using it.

Below is just a selection of our 'Blue Chip' clients. So you'd be in auspicious company. And, if you want the low-down on what we did for them, ask our sales staff for a copy of our current case studies.



Technical Specifications & Compatibility:

LANSpy is a truly awesome monitoring and information-gathering tool, yet it's installed within a few minutes using a simple-to-follow set-up wizard.

This is a system designed to run with all major ISDN and LAN networks. It's a system designed to be easily accessible and invaluable to managers who are not IT specialists. And it's a system designed to integrate with other systems and equipment which its users will almost certainly already operate.

- Systems are configured for any multiple of 5 managed routers
- Supports Cisco, 3Com, BinTec, Ascend and Westell (Teltrend) ISDN routers

- Exports to Microsoft® Excel® spreadsheets (.csv file format)
- Saves as both .bmp and .wmf windows meta file files for charts and graphs
- Over 400 types of graphs and charts can be created using the graph wizard
- 2 and 3-dimensional, 3-colour system status mapping
- User-definable audible and emailed alerts
- Configurable for use within certain parameters e.g. 1 hour of calls per-day
- Uses TFTP to save and restore router configurations
- Enables routers to be updated with latest product codes as they're released

System Requirements:

Designed for Microsoft Windows NT Windows 98 LANSpy's system requirements will not make undue demands on your capacity because it's engineered for swift, no-nonsense and inexpensive integration into small, medium and large enterprises alike.

This means, importantly, that there are no hidden expenses. Simply boot it up and away you go!

- Windows 95/Windows 98 /Windows NT4 / Windows 2000
- Minimum 64MB RAM for Windows 95/Windows 98
- Minimum 128MB RAM for Windows NT4 / 2000

- 15MB hard disk space for install
- Colour monitor (ideally 1024 x 768 resolution) or above
- Network card and TCP/IP stack loaded



Quickly analyse ISDN call information and export results to Microsoft® Excel® in CSV format

In short, LANSpy™ ISDN is a system that you cannot afford to ignore. If you'd like to find out more about it, if you'd like to see some endorsements or projections, or if you'd like to see it up-and-running, then contact us now for an informal discussion without obligation.